

# StormPrint

**StormPrint™ provides an immediate, accurate wind footprint following every land-falling hurricane and significant coastal storm. It delivers a precise representation, verified by extensive ground truth observations.**

## STORMPRINT BENEFITS

- Determine hurricane deductibles
- Accurately model losses
- Determine accuracy of claims
- Monitor storms in real-time
- Alert on critical thresholds
- Deploy claim settlement resources
- Settle capital market transactions

## DESIGN PRINCIPLES

- Created specifically to meet the needs of the insurance and catastrophic response industries
- Focused on the most reliable, highest value sustained wind and gust observations
- Applies rigorous metadata and quality assurance standards
- Standardizes dissimilar observations to a prescribed common measurement standard

## KEY FEATURES

- Storm peak and time series data
- Sustained wind and gust values
- Includes raw, standardized, and modeled values
- Tailored reports and alerts
- Full-featured web-based viewer

## The StormPrint Solution

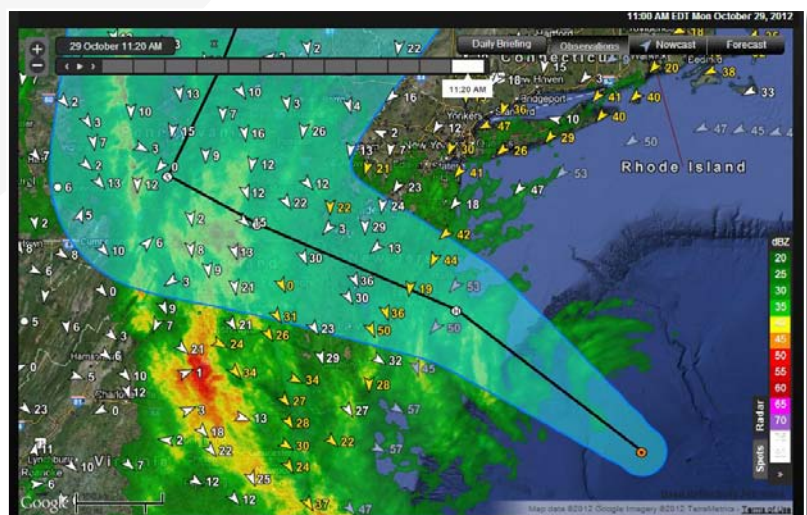
StormPrint is a state-of-the-art geospatial analysis that provides an extremely accurate representation of wind speeds experienced during land-falling hurricanes and other strong coastal storms.

Driven by an unparalleled set of the highest quality observational data and associated metadata, StormPrint supports the insurance and CAT modeling industries with reliable, representative, and timely wind data so that critical decisions can be made rapidly and based on the best possible information.

Unlike other product offerings or government reports, StormPrint provides the most important observations and assessments in real- or near real-time, when they are of most value to decision makers.

The cornerstone of StormPrint is WeatherFlow's proprietary observing network of 400 professional quality coastal stations, including 100 hurricane-hardened stations. These are combined with National Weather Service/NOAA stations and a carefully vetted selection of other partner networks to provide an unmatched aggregated wind dataset.

The StormPrint suite of products includes storm peak and time series sustained wind and gust data (with raw, standardized, and modeled values), tailored reports and alerts, and full-featured web-based viewing capabilities.



## STORMPRINT ADVANTAGES

### Promptly determine where hurricane deductibles apply

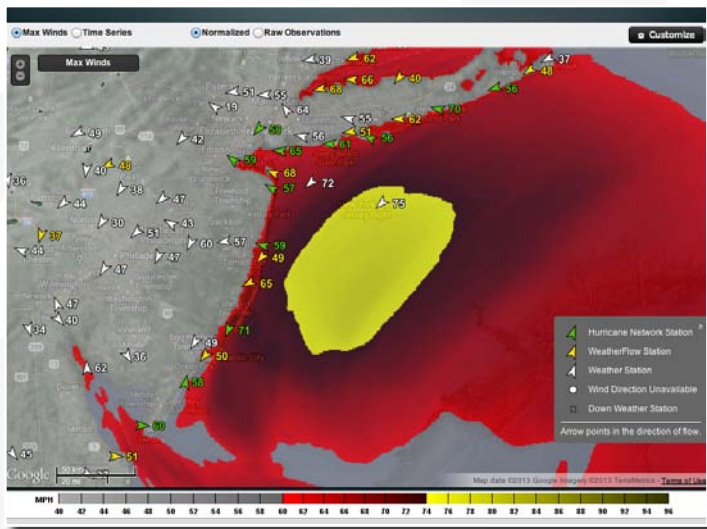
Learn immediately after a storm if hurricane deductibles apply – a decision that has a multi-billion dollar impact†. Our ever-expanding network significantly increases the chances of capturing hurricane-force winds, allowing a more accurate and comprehensive deductible trigger.

### Model projected losses quickly and accurately

Use StormPrint's state-of-the-art high resolution geospatial analysis for input into your CAT models so you can promptly project losses. Get analysis results within 24 hours of a storm's passage, customized for ingest into your toolset.

### Confidently determine the accuracy of claims

Your team can settle claims knowing you have the best information on which to base decisions. We stand behind the StormPrint analysis in any dispute.



### Real-time monitoring

Monitor active storm events in real-time with StormTrack – a graphical user interface supplied with StormPrint. This map-based tool allows you to monitor

the most complete set of real-time observations, satellite, radar, forecast tracks, warnings, forecast models, and other storm specific datasets on the market.

### Customized wind speed alerts and reports

Set observed wind speed alerts at prescribed thresholds to reduce sifting through data in real-time and avoid being caught unawares. Obtain customized summary reports of wind speed and gust maximums so you can see important highlights at a glance.

WeatherFlow StormPrint - Super Storm Sandy			Storm Highlights		
Organization	Mesonet	Stn Name	Height AGL (ft)	Max Avg (mph)	Max Gust (mph)
WeatherFlow	Professional	Great Gull Island	52	74.9	84.9
WeatherFlow	HurrNet	Tuckerton	31	71.0	87.1
WeatherFlow	Professional	Eaton's Neck	72	70.3	95.5
WeatherFlow	HurrNet	East Moriches CG	31	69.8	80.4
WeatherFlow	Professional	Sandy Hook	58	67.9	87.9
NOAA / NWS	NDBC / C-MAN	Buzzards Bay Buoy	79	66.7	74.8
WeatherFlow	HurrNet	Brick	31	66.3	77.7
WeatherFlow	Professional	Bayville	39	65.5	77.0
WeatherFlow	HurrNet	Breezy Point	31	65.1	75.4
WeatherFlow	Professional	Pt. Judith	52	64.7	80.8
WeatherFlow	HurrNet	West Island	31	64.6	80.4
NOAA / NWS	NOS / COOPS	Robbins Reef	50	63.0	90.0
WeatherFlow	HurrNet	Fishers Island	31	62.4	76.7

### Deploy claim settlement resources efficiently

With StormPrint and StormTrack you can plan and fine tune where adjusters, supporting personnel, and other resources should be deployed, with data and displays fully available to personnel in the field.

### Settle parametric capital market transactions

WeatherFlow data is utilized within WindX and Paradex driven capital market transactions. For more information on these products contact [info@windx.com](mailto:info@windx.com).

### StormPrint products can be found at

<http://ds.weatherflow.com/storm>.

For more information and access to the StormPrint product line, contact Marty Bell at 970-818-7635 or [mbell@weatherflow.com](mailto:mbell@weatherflow.com).

† Over \$4 billion in additional carrier losses during Sandy